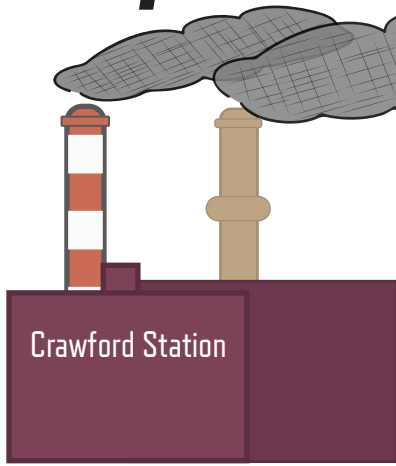


Crawford Coal Power Plant



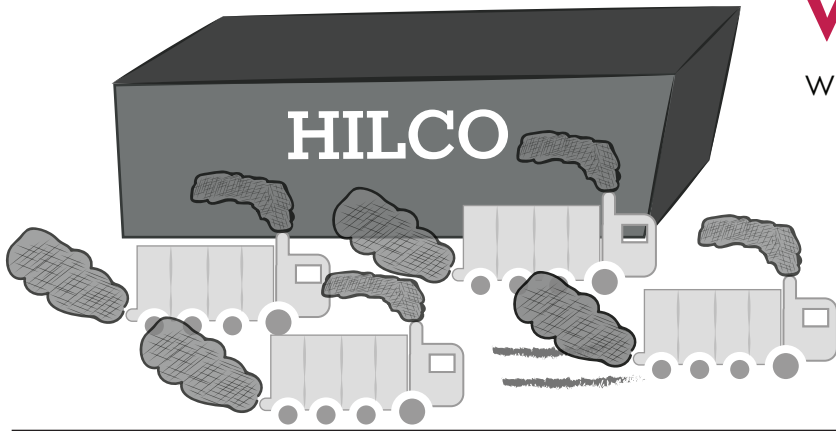
Closed in 2012, because Crawford & Fisk coal plants had been linked to **40 deaths, 550 emergency room visits** and **2800 asthma attacks***

*SOURCE: 2002 Harvard School of Public Health Study Levy, Jonathan I., John D. Spengler, Dennis Hlinka, David Sullivan, and Dennis Moon. "Using CALPUFF to evaluate the impacts of power plant emissions in Illinois: model sensitivity and implications." Atmospheric Environment 36, no. 6 (2002): 1063-1075.

Hilco Global's Plans

Hilco wants to build a **1 MILLION SQ. FT WAREHOUSE** on Crawford that will only bring:

- **Temporary Jobs**
 - Will **NOT** enforce lessee to have living wage jobs on site
- **Air Pollution**
 - Will **NOT** enforce lessee to commit to using electric/filtered trucks
- **More Trucks, More Traffic**



WHAT DO **WE** WANT?



No More Diesel in Little Village



Industrial Permits that require Health & Environmental Reviews



Urban Agriculture & Training in Industrial Corridor

Come out **Thurs., Sept 13th** and tell the Chicago Plan Commission to

Vote NO!
to HILCO PLAN

When: Thursday **Sept. 13th** @ 10:00 AM

Where: City Hall – 121 N. LaSalle St.

773.762.6991

ienriquez@lvejo.org

lvejo.org

LVEJO
Little Village Environmental
Justice Organization

CALL Alderman Ricardo Muñoz at **(773) 762-1771** and tell him "**Hell No** to Hilco!"

CALL Alderman Solis (Zoning Chair) at **(773) 523-4100** and tell him to "**Vote No** to Hilco!"